



The Titanium 85, 125 and 165 are high-end, compact, high productivity Conventional and Thermal Plate Processors.

They have been designed and built to meet the requirements of even the most demanding pre-press environment.

Features include:

- PLC control system with I/O PCB
- Full colour LCD touch screen display with multi language options
- Small compact footprint
- Fully adjustable developer guide plates
- High efficiency drying system
- Large bore/high flow waste drainage system

The Titanium can be configured for on-line or off-line use using the extensive range of optional platesetter interfaces or infeed and exit tables.

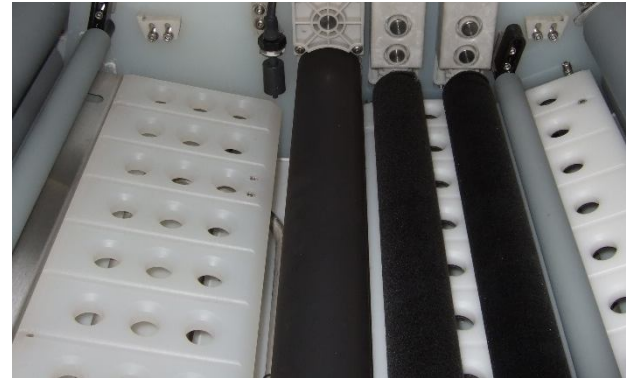
Other options include second developer brush, conductivity probe, water recirculation, gum flush, bottle sensors, developer flow switch, plate re-entry, drip tray, lower side plumbing/bottle cover, wash down hose, remote access system, warning beacon and preventative maintenance kits.



TITANIUM | 85/125/165

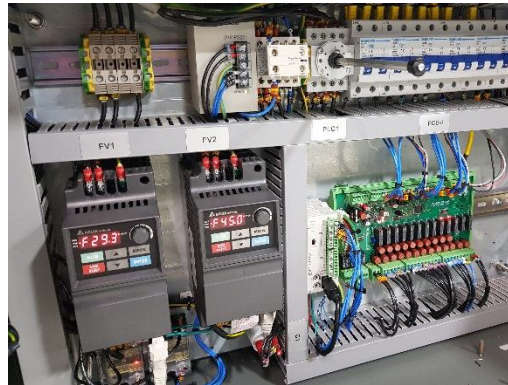


Full Colour LCD Touch Screen HMI Display provides access to all control functions and displays all processing parameters

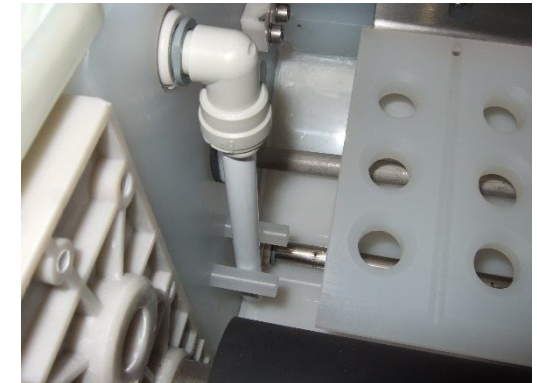


Fully adjustable developer plate guides. Ensures perfect plate alignment into and through the developer section reducing any potential for bow waves

PLC control system with I/O PCB, inverter conveyor/drive and brush motor control



Direct-to-tank replen system ensures consistent developer activity



Easy access to all major components including pumps and motors via quick release and removeable covers



Heavy duty chain drive system with AC drive and brush motors. Idlers fitted with sealed ball race bearings for maintenance free operation

TECHNICAL CHARACTERISTICS

- PLC control system with I/O PCB and intuitive touch screen display with multi language options
- Development by immersion and single rotating brush roller with facility for second (optional) brush
- Adjustable developer temperature from 15 to 34°C
- Developer constantly circulated via filter and two immersed spray bars to ensure uniformity of temperature and conductivity
- Integrated developer cooling system – chiller and water cooled coil in tank
- Developer cover to minimise oxidation
- Developer bulk fill pump
- Automatic m² and anti-ox (hourly & sleep) developer replenishment
- Adjustable transport roller speed (dip time) from 662 to 2192mm/min. (13-43 seconds)
- Adjustable brush roller speed from 10 to 150RPM
- Rotating brush roller in rinse
- Manual flow control valves on rinse & gum spray bars
- Fully adjustable dryer output power from 0 to 100%
- 7-day start/stop timer function
- Programmable jog/auto run function
- Plate jam detection
- Developer, Developer Filter & Gum Change Alarm & usage displays
- Roller assemblies easily removed without tools
- All tank components including spray bars, guides etc. easily removed for cleaning and servicing
- Pumps and motors easily accessible for servicing
- Heavy duty chain drive system with AC motors

Bottle Sensors – Option

The **TITANIUM** can be fitted with optional bottle sensors for the developer replen and developer overflow containers. The sensors generate a 'Check Bottles' error when either the developer replen bottle is empty or the developer overflow bottle is full.



Water Saving System – Option

The **TITANIUM** can be fitted with an optional Internal Water Recirculation System which reduces water usage and waste by up to 90%. The rinse tank holds a volume of water which is then re-circulated and filtered via upper and lower spray bars in the tank. The tank is replenished every m² of plate processed via a mains water supply and solenoid valve. Only a minimal amount of water is used/wasted per plate compared to the Direct to Drain method.



TITANIUM 85/125/165 SPECIFICATIONS

| | 85 | 125 | 165 |
|---|--|---|---|
| PLATE TYPES | Most Conventional, UV (CTcP) & Thermal Lithographic Plates | | |
| MAXIMUM PLATE WIDTH | 850mm (33.4") | 1250mm (49.2") | 1650mm (64.9") |
| MINIMUM PLATE LENGTH | 300mm (11.8") | | |
| PLATE THICKNESS | 0.15-0.40mm (0.006-0.016") | | |
| PROCESSING SPEED | 662-2192mm/min. (26.06-86.30"/min.) / 13-43 seconds dip-to-nip | | |
| DEVELOPER TANK CAPACITY | 48 litres (12.68 US gal.) | 70 litres (18.49 US gal.) | 106 litres (28.00 US gal.) |
| RINSE TANK CAPACITY | 31 litres (8.19 US gal.) | 44 litres (11.62 US gal.) | 64 litres (16.91 US gal.) |
| GUM/FINISHER TANK CAPACITY | 3.5 litres (0.92 US gal.) | 5.3 litres (1.40 US gal.) | 4.5 litres (1.19 US gal.) |
| MACHINE DIMENSIONS (L x W x H) Excl. Control Pod | 1265 x 1426 x 1115-1185mm (49.8 x 56.1 x 43.9-46.7") | 1265 x 1840 x 1115-1185mm (49.8 x 72.4 x 43.9-46.7") | 1519 x 2270 x 1115-1185mm (59.8 x 89.4 x 43.9-46.7") |
| PLATE INPUT HEIGHT | 920-990mm (36.2-39.0") | | 910-980mm (35.8-38.6") |
| PLATE EXIT HEIGHT | 910-980mm (35.8-38.6") | | 935-1005mm (36.8-39.6") |
| MACHINE NET WEIGHT | 560kg (1232lbs) | 600kg (1320lbs) | 750kg (1650lbs) |
| ELECTRICAL SUPPLY / RATING | 3Ph + N + PE/GND (4W + GND), 400V AC, 50/60Hz | | |
| | 14A | | |
| | 3Ph + PE/GND (3W + GND), 200-230V AC, 50/60Hz | | |
| | 18A | | 22A |
| | 1Ph + N + PE/GND (2W + GND), 200-230V AC, 50/60Hz | | |
| | 22A | | 26A |
| WATER SUPPLY / WASTE CONNECTION | Supply = 3-5 bar (43.5-72.5 psi) / 3/4" BSPM – Waste = 32mm Compression Elbow / 1-1/2" BSPM | | |
| NOISE LEVEL | <60dB | | |
| ROOM TEMPERATURE / HUMIDITY | 18-29°C (64.4-84.2°F) / 20-70% non-condensing | | |
| APPROVALS | Complies to CE standards and RoHS directive / cETLus listed | | |

HEIGHTS (UK) LTD. maintains a policy of continuous product improvement and reserves the right to change specification without notice

HEIGHTS (UK) LTD.
Wainstalls, Halifax, West Yorkshire,
HX2 7TJ, United Kingdom
Tel.: +44 (0)1422 240914
Fax: +44 (0)1422 240589
Email: info@heights-uk.com
Web: www.heights.com

HEIGHTS USA INC.
1445 Lower Ferry Road, Ewing,
NJ 08618, USA
Tel.: +1 609 530 1300
Fax: +1 609 530 9430
Email: info@heights-usa.com
Web: www.heights-usa.com

TITANIUM

